

Magnetic Activated Sperm Enrichment (MaSE) Technology



For separating damaged sperm, DNA fragmented sperm, spermatozoa with chromosomal abnormalities, and Apoptotic spermatozoa from the normal spermatozoa before ART.

Suitable for

- Male factor with high DFI undergoing ART
- Recurrent Pregnancy loss post ART attributed to male factor

Advantages

- Ease of use; with washed sperm cells, no need for DGC
- Time saving and suitable for bench setting; no special columns required
- Ensuring spermatozoa with high DNA integrity for ART
- Gentle Separation, minimizing risk of cell damage and shearing of nucleic acids
- Removing abnormal chromosome spermatozoa for a better PGD outcome

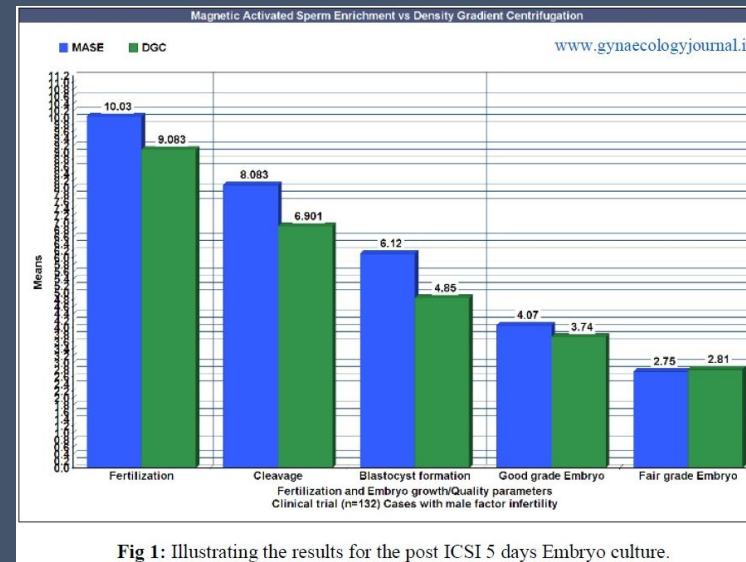
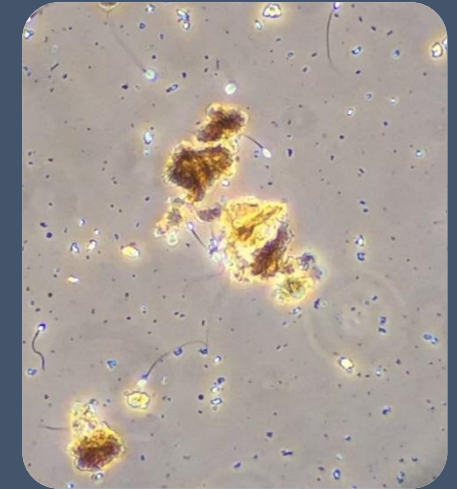


Fig 1: Illustrating the results for the post ICSI 5 days Embryo culture.

Significant reduction in DNA fragmented, damaged and moribund spermatozoa, higher number of Blastocysts retrieved & higher post vitrification/thawing survival rate for Embryos.